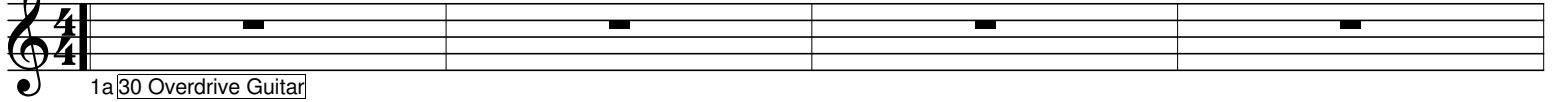


Doors - Light my Fire

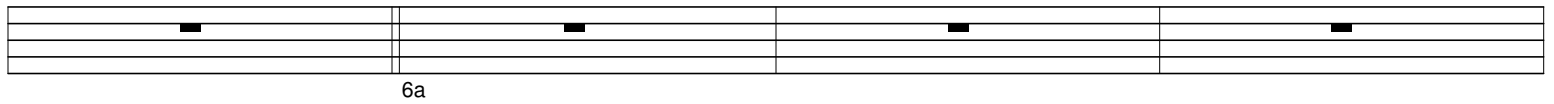
C Bb Eb7 Ab Db D



1a 30 Overdrive Guitar

This block contains the first line of the guitar score. It features a treble clef and a 4/4 time signature. Above the staff, the chords C, Bb, Eb7, Ab, Db, and D are written. The staff itself shows four measures, each with a single horizontal line on the second line, representing a power chord. A bracket labeled '1a' spans the first measure, and a box labeled '30 Overdrive Guitar' is positioned below the first measure.

Dm7 Dm Bm Dm



6a

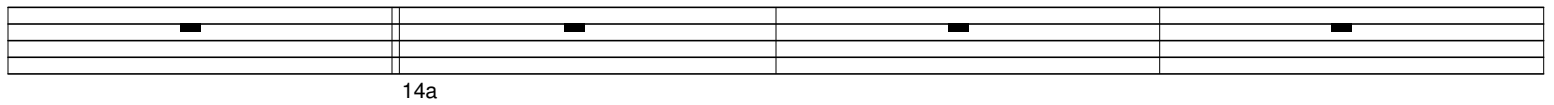
This block contains the second line of the guitar score. It features four measures with the chords Dm7, Dm, Bm, and Dm written above. Each measure has a single horizontal line on the second line. A bracket labeled '6a' is positioned below the second measure.

Bm Dm Bm7b5 Dm



This block contains the third line of the guitar score. It features four measures with the chords Bm, Dm, Bm7b5, and Dm written above. Each measure has a single horizontal line on the second line.

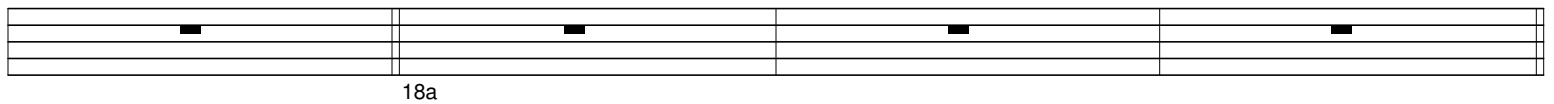
Bm C D G G7 C D



14a

This block contains the fourth line of the guitar score. It features eight measures with the chords Bm, C, D, G, G7, C, and D written above. The first measure has a single horizontal line on the second line. A bracket labeled '14a' is positioned below the second measure.

G C A Am7



18a

This block contains the fifth line of the guitar score. It features four measures with the chords G, C, A, and Am7 written above. Each measure has a single horizontal line on the second line. A bracket labeled '18a' is positioned below the second measure.

Dm Bm Dm Bm

21a

Dm Bm Dm Bm

C D G G7 C D G

29a

C A Am7 Dm Em

33a 36a

Dm7 Em7 Dm Em Dm7 Em7 Dm Em

Dm Em Dm Em Dm6 Em7 Dm Em7

Dm Em7 Dm Em7 Dm Em Dm Em

46a 48a

Dm Em Dm Em Dm Em Dm Em

50a

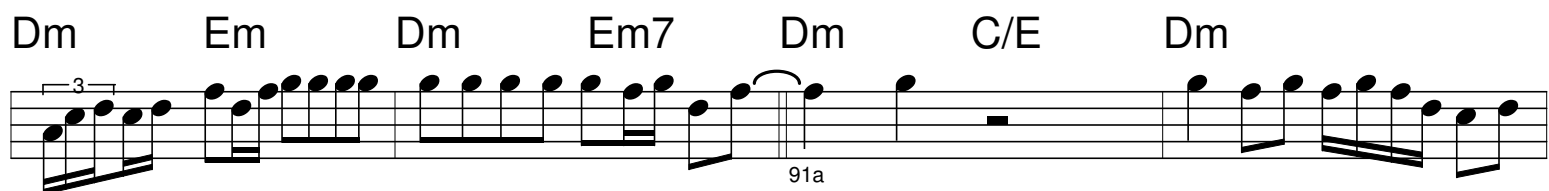
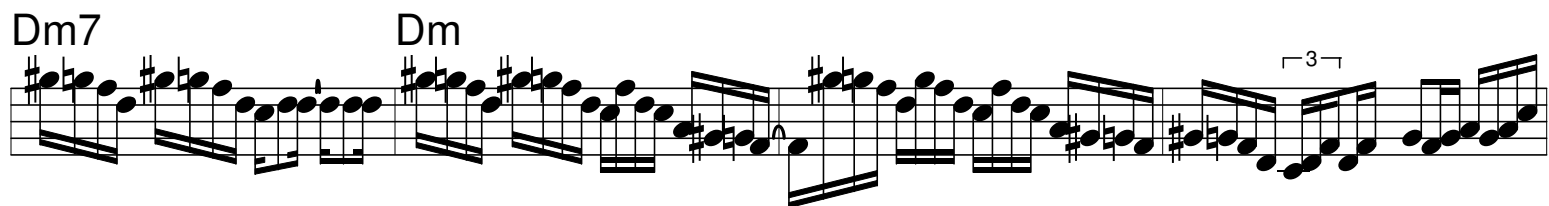
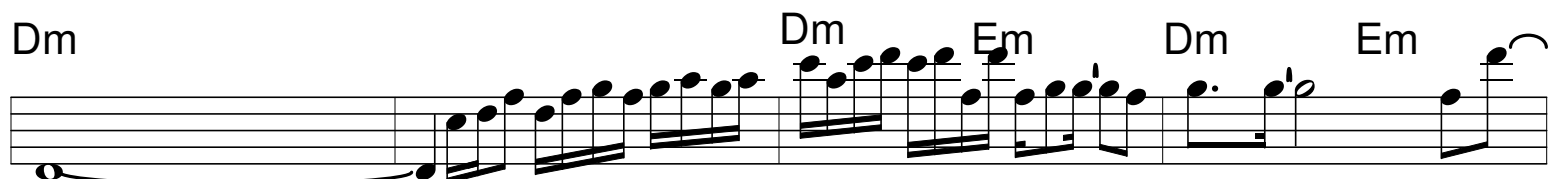
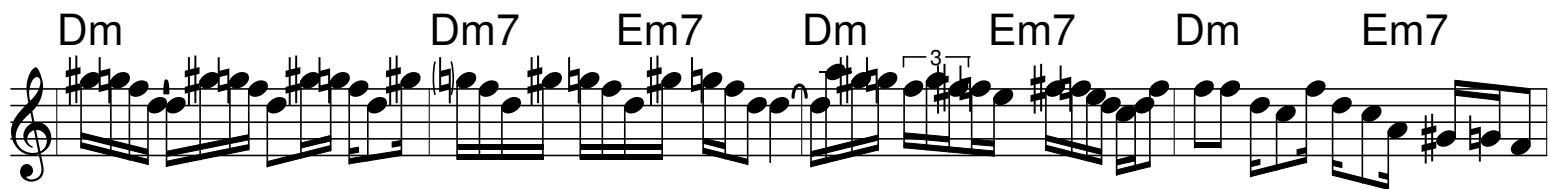
Dm Dm Em Dm Em Dm Em

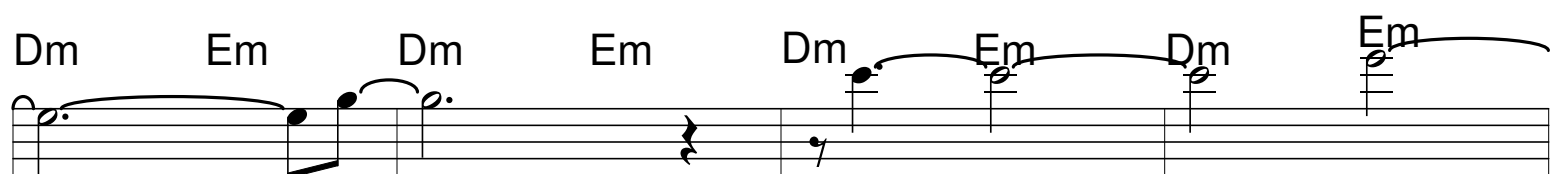
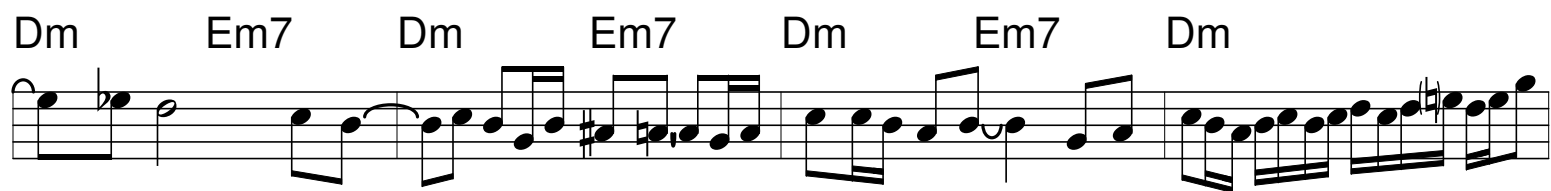
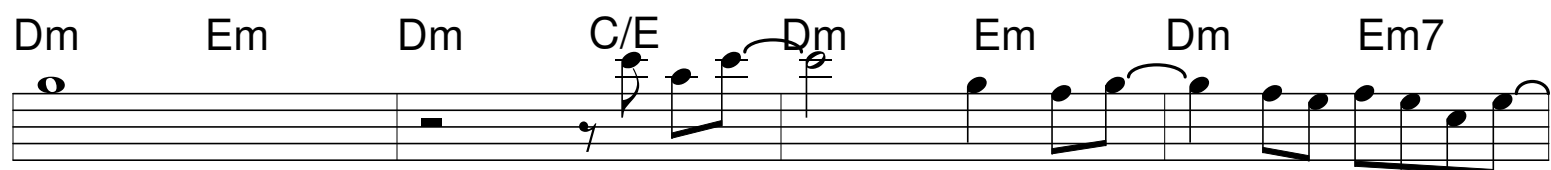
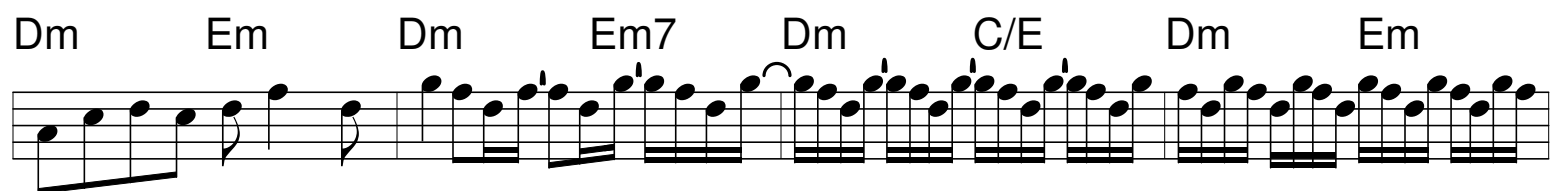
Dm Em Dm Em Dm Em Dm Em

Dm Em7 Dm Em Dm Em7 Dm Em

62a

Dm Em Dm Em Dm Em Dm Em7





Dm Dm Am7/E Dm7 Em7 C

Bb Eb7 Ab Db D Dm7

Dm Bm Dm Bm

125a

Dm Bm Dm Bm7b5

C D G C D G

133a

C A Am7 Dm

140a

Bm Dm Bm7b5 Dm

Bm Dm Bm C D

148a

G C D G Bb

G7 Bb G7 Bb

156a

G Bb G

159a

C Bb Eb7 Ab Db Dm7

Dm7 Db

